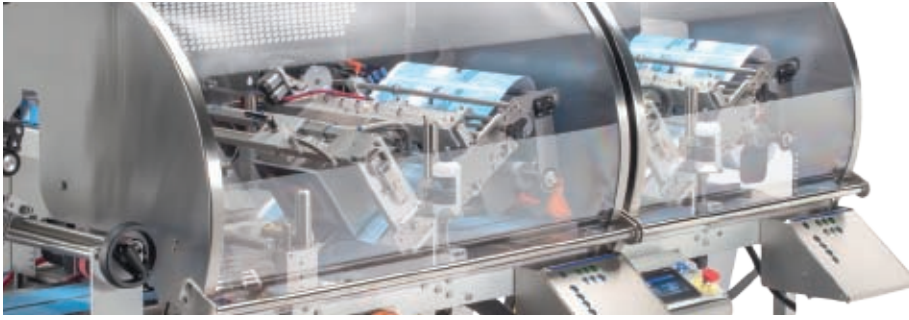
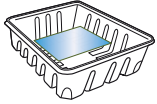




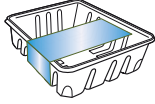
## Nobac 500/T



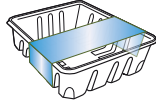
Pictured is the nobac 500T



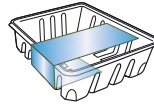
landscape top



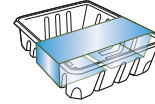
landscape top & side



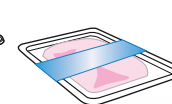
landscape top & 2 sides



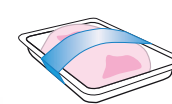
landscape c-wrap



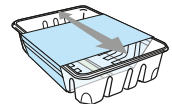
landscape full wrap



skin pack landscape full wrap

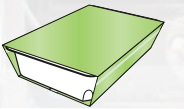
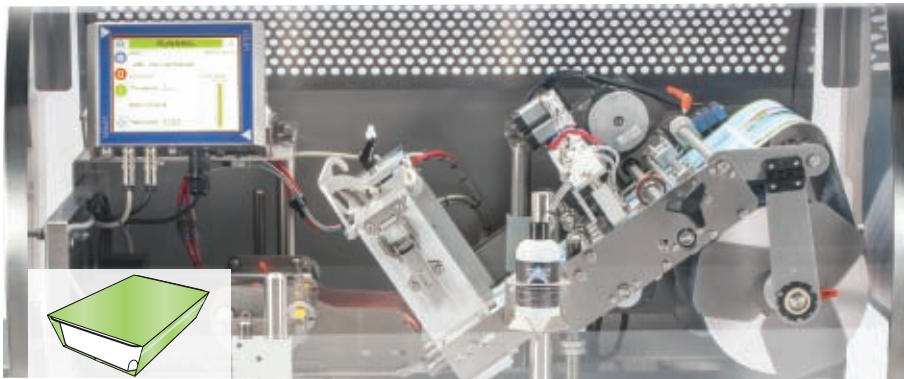


skin pack landscape full wrap protruding up to 25mm above height of tray



landscape full wrap slideable

## Nobac 500R



landscape ready meal

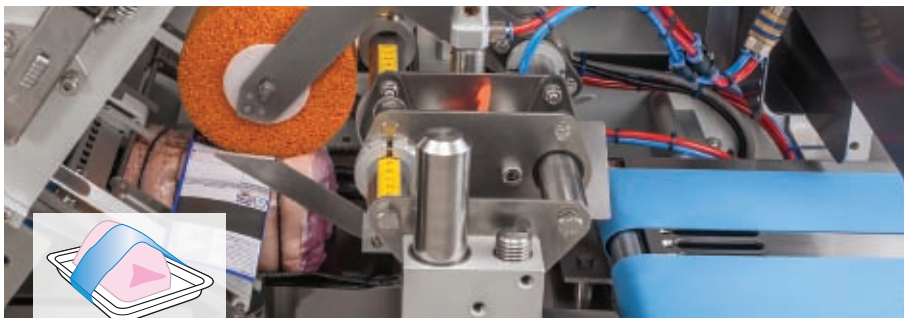
## Nobac 500PP



skin pack landscape full wrap

protruding up to 70mm above height of tray

## Nobac 500SP

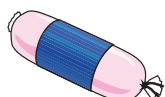


landscape full wrap

super protruding from 50mm up to 100mm above height of tray

## Nobac 500S

salami full wrap



### Standard Linerless Labelling

- Reels weigh up to 40% less and take up 40% less storage and transport space
- No need to recycle siliconised carrier paper
- Lower carbon footprint
- Green labels reduce business costs and increase environmental sustainability

### Slideable Linerless Labelling

- Slides like a cardboard sleeve but supplied on a roll
- Printable up to 300gsm to size 500mm x 125mm
- Automated packing with high production numbers
- On-demand printing removes the need for reprints

### Ready Meal Slideable Linerless Labelling

- Slides like a cardboard sleeve but supplied on a roll
- Printable up to 300gsm to size 500mm x 225mm
- Full sleeve
- Option to feature transparent window

### Skin Pack Linerless Labelling

- Ideal for super-protruding food products
- Fewer and smaller tray styles needed so less packaging
- Longer shelf life so less waste
- Products can be shipped across different altitudes

Uvoznik za HR:

Server Mark d.o.o. , J. Martinovića 9, Zagreb

prodaja@server-mark.hr

www.server-mark.hr

**SERVER**  
**MARK**  
**INDUSTRY SOLUTIONS**